



CASE OF WANDERLUST

C Central Resort The Palm is a 203-key beachfront hotel and resort overlooking the Arabian Sea. It features luxe rooms and suites with contemporary décor, dramatic wall art, flat screens, and glass balconies with ocean and Palm Jumeirah views. Staying at the core of relaxation combines everything you need for a perfect home-away-from-home: a stunning location, magnificent surroundings, impeccable staff service, and above all, supreme accommodation completed by a wide array of exceptional facilities such as exclusive access to a private beach, a pool bar, multiple dining options, spa, fitness center, gift shops, and state-of-the-art conference center, water-sports, bars, and more. This beautiful resort at The Dubai Palm Jumeirah is a place where luxury amenities and high-end services are superbly topped by reasonable prices that welcome adventure seekers, honeymooners, and intimate family gatherings.



ROOMS & SUITES



Total no. of rooms: 203

Superior King Rooms: 39	Deluxe King Rooms: 55
Superior Twin Rooms: 10	Deluxe Twin Rooms: 21

Premium Palm View King: 60	Palm Suites: 5
Premium Palm View Twin: 7	Skyline Suites: 6

Superior Rooms

Elegantly designed rooms with a choice of king beds or twin beds with partial sea views.

Deluxe Rooms

Tastefully designed rooms with private balconies are available with king beds or twin beds with partial sea views.

Executive Suites

Luxury and comfort are combined in these stylish suites, offering eye-catching views of the Dubai skyline from your private balcony with a partial sea view of 70 m in size.

Skyline Suites

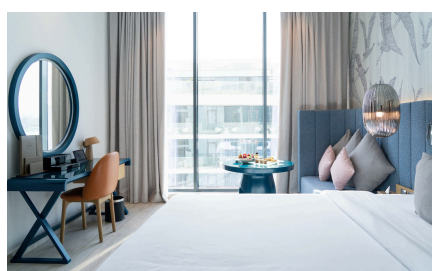
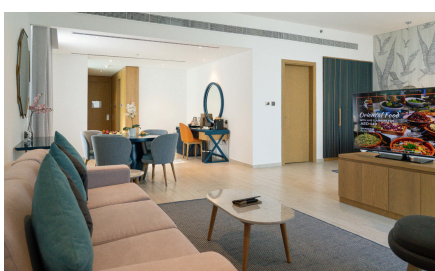
Luxury and comfort are combined in these stylish suites, offering eye-catching views of the Dubai skyline from your private balcony with a partial sea view of 60 m in size.

Premium Rooms

Unwind and relax in our gracefully designed rooms with spectacular views of the Palm from your private balcony. These rooms are available with a choice of king and twin beds and with beds with full sea/pool views.

Palm Suites

Located on the top floors, these suites offer breathtaking views of the palm from your private balcony with a full sea/pool view.



RESTAURANTS & BARS



Waves Restaurant All-Day Dining | 7:00 AM to 22:30 PM

With an array of continental and timeless favourites from entrée through dessert, this all-day dining restaurant comes with waves and ocean views.

C Grill Restaurant | 12 PM to midnight

A modern steakhouse serving a wide range of innovative dishes and fine beverages in the Central Resort. The result is a truly unforgettable dining experience.



Mojito Pool Bar | 10:30 AM to 20:00 PM

Located on the beach side, the Mojito Pool Bar offers freshly prepared food and beverages while enjoying the sun and sand.

Baristas' Corner | Open 24 hours

Located in the lobby, relax and enjoy a variety of light snacks paired with an exquisite selection of various teas and coffees.



In-Room Dining | Available 24 hours

Have a dining experience delivered straight to your room and choose from an extensive menu - available all day with options that is ideal for breakfast, full-course meals, snacking, or romantic private dinners.

THE HEALTH CLUB

With its modern gym, massage room, steam room, and jacuzzi, our health club keeps you fit and healthy.



THE SPA | 11:00 AM to 23:00 PM

The spa offers relaxing treatments that utilize natural oils and fragrances to stimulate the senses and increase the well-being of the mind, body, and soul.



THE GYM | 06:00 AM to 23:00 PM

Stay fit and healthy while staying with us. Get active in our fully equipped modern gym with steam rooms and locker rooms.

GUEST SERVICES & FACILITIES

Each and every aspect of C Central Resort The Palm is maintained to the highest possible standard. Whether you are working out in the gym or lounging by the pool, you will be treated with excellent service, superior facilities, endless activities, and friendly staff. They will extend above and beyond to ensure you have a wonderful stay.

- Exclusive Private Beach-side access at Dubai the Palm Jumeirah
- Water-sports and equipment rental
- Outdoor Swimming Pool and pool bar
- Multi cuisine restaurants and bars
- State of the art gymnasium and spa
- 24 Hrs Reception and Concierge
- Daily Housekeeping Service
- Free onsite Parking
- Valet parking
- Business Centre
- Travel Desk
- Gift Shop
- Male & Female Salon
- Meeting and Events Facilities
- Laundry, pressing and dry-cleaning services



IN-ROOM QR-CODE SYSTEM

All guest rooms are equipped with a customized interactive QR-CODE that serves as a digital guest service directory. This connects you to a wide range of services such as wake-up calls, restaurant reservations, dining menus, in-room ordering, housekeeping requests, guest notifications, and guest feedback.

VIP DISCOUNT CARD

VIP by Central Hotels offers you an exclusive discount on room bookings, dining, and facilities while staying with us. From free room upgrades to complimentary late checkout, the VIP program has more to offer.



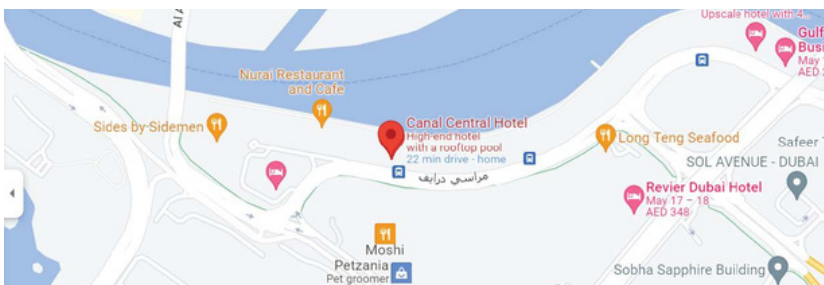
MEETING ROOM

With business travel in mind, experience a selection of meeting facilities at C Central Resort - The Palm. From meeting rooms to intimate lounges, each space is the right location for corporate or social events. It has flexible layout options to cater to various requirements.



MEETING ROOM CAPACITIES

Cocktail	30
Theatre	50
Classroom	20
U-Shape	20
Boardroom	20



LOCATION

C Central Resort-The Palm is located on the East Crescent of Dubai's iconic Palm Jumeirah. This world-famous landmark is located close to the Dubai Marina and only 25 minutes away from the Dubai International Airport, its exceptional location on the shores of the Arabian Gulf. Many of Dubai's popular attractions are merely moment away from the resort, including Mall of the Emirates, Jumeirah Beach Residence, The Dubai Mall, The Nakheel Mall and lots more.

C CENTRAL RESORT

P.O.BOX 283507, East Crescent, Palm Jumeirah, Dubai, United Arab

Emirates Tel: +971 4 873 5500 | Fax: +971 4 873 5501

Email: info@CCR@central-hotels.com | Visit: www.central-hotels.com